

# Totur fra Bornholm I

Melodi

Efter Henrik K. Ibsen, Åkirkeby

♩ = 500

D D A<sup>7</sup> D D Bm G A D

2. stemme

3. stemme

9 A D A D G D A D A Bm G A D

## Totur II

Fra Kjøllergårdskassen

18 A D E<sup>7</sup> A A D E<sup>7</sup> A

A D E<sup>7</sup> A A D E<sup>7</sup> A

27

A E D A A D 1.2.  
E<sup>7</sup> A

A E D A D E<sup>7</sup> A

## Totur III

Efter Henrik K.Ibsen Åkirkeby

36 3.  
E<sup>7</sup> A D D Em Em G G A<sup>7</sup>

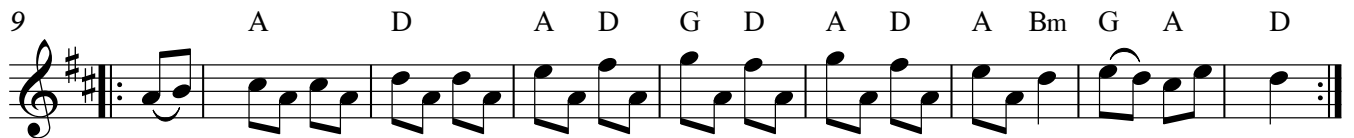
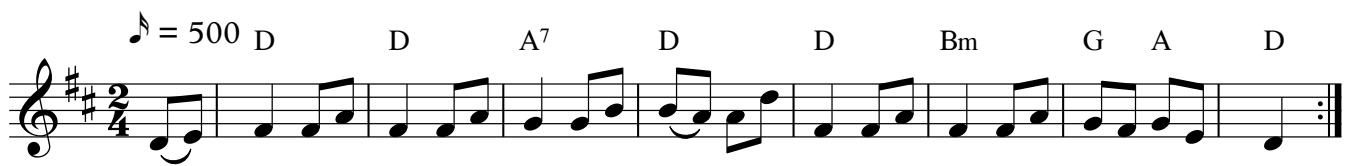
A

46 D Bm G A D Bm Em A<sup>7</sup> D

# Totur fra Bornholm I

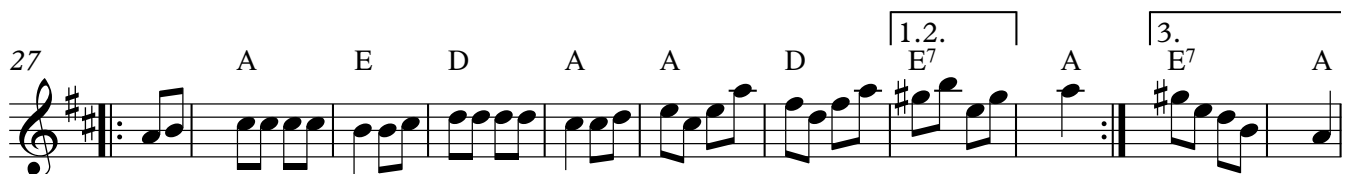
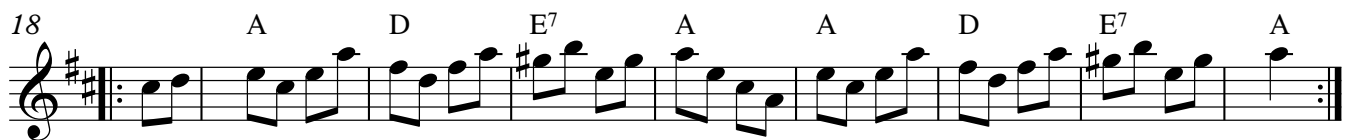
Melodi

Efter Henrik K. Ibsen, Åkirkeby



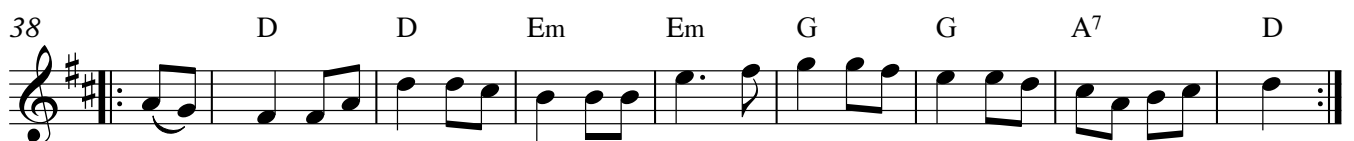
## Totur II

Fra Kjøllergårdskassen



## Totur III

Efter Henrik K. Ibsen Åkirkeby



# Totur fra Bornholm I

2.stemme

Efter Henrik K. Ibsen, Åkirkeby

♩ = 500



## Totur II



## Totur III

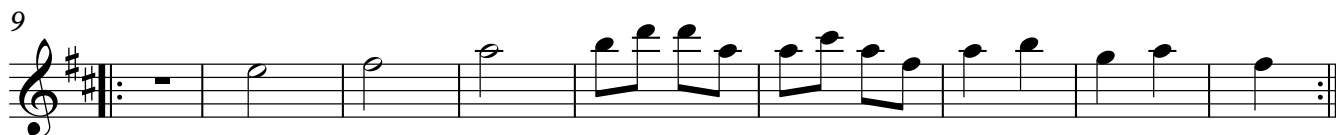


# Totur fra Bornholm I

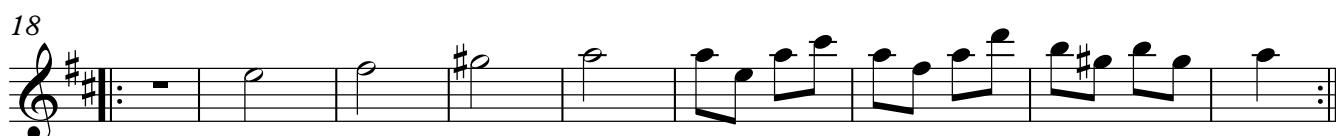
3.stemme

Efter Henrik K. Ibsen, Åkirkeby

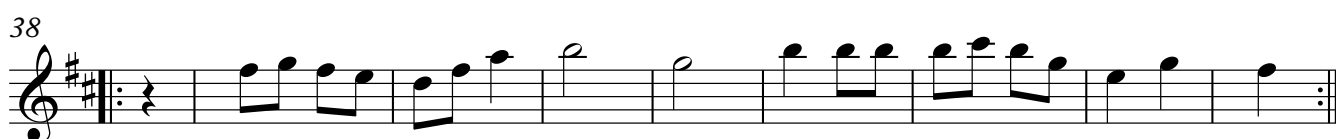
♩ = 500



## Totur II



## Totur III



[Unnamed (bass staff)]

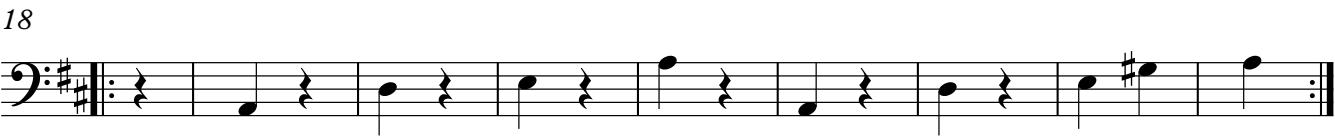
# Totur fra Bornholm I

Efter Henrik K. Ibsen, Åkirkeby

♩ = 500



## Totur II



## Totur III

